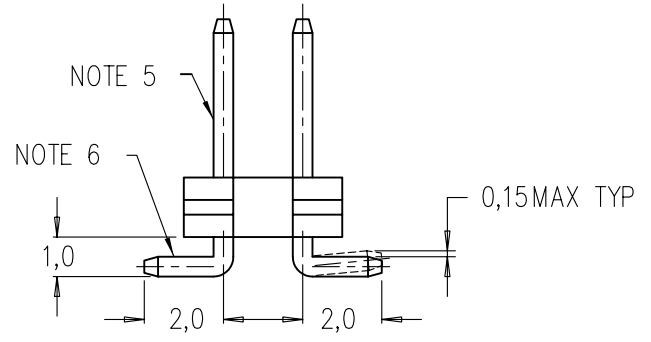
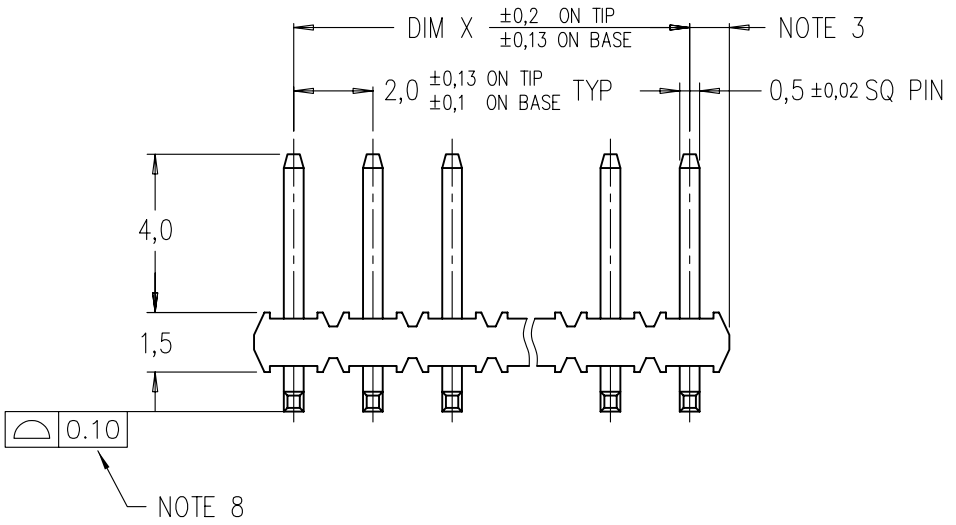
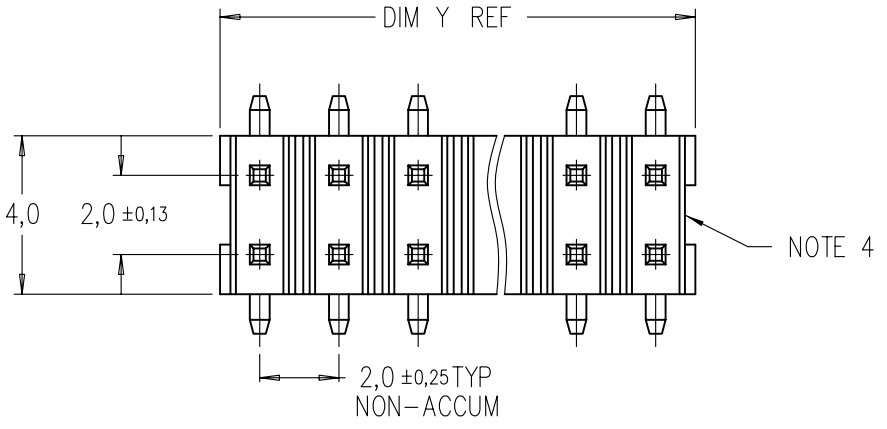


Tous droits strictement reserves. Reproduction ou communication a des tiers interdite sous quelque forme que ce soit sans autorisation ecrite du proprietaire. Propriete de c FCI. Droits de reproduction FCI.



All rights strictly reserved. Reproduction or issue to third parties in any form whatever is not permitted without written authority from the proprietor. Property of FCI. Copyright FCI.



CONFIDENTIAL

mat'l. code				tolerances unless otherwise specified			CUSTOMER COPY		FCI www.fciconnect.com	
ltr	ecn no	dr	date	linear	±0.25		projection MM	title		
A	S40240	BSL	10/5/94		MINITEK II SMT STR			code		
B	S40281	BSL	11/8/94		HEADER (SnPb S.T)			-		
C	S05-0054	KBM	2/23/05	angles			scale 10:1	product family		code
				dr	BS LOW	5/24/99		MINITEK		
				engr	BS LOW	5/24/99		size		dwg no
				chr	KB MAH	2/23/05		A		94262
				appd	JOEY NG	2/23/05				1 of 2
sheet index	revision sheet	C	C							
		1	2							

cage code 22526
STATUS Released

ACAD

PDM: Rev:C

Printed Jul 20, 2005

Tous droits strictement reserves. Reproduction ou communication a des tiers interdite sous quelque forme que ce soit sans autorisation écrite du propriétaire. Propriete de c FCI. Droits de reproduction FCI.

FCI

All rights strictly reserved. Reproduction or issue to third parties in any form whatever is not permitted without written authority from the proprietor. Property of FCI. Copyright FCI.

A

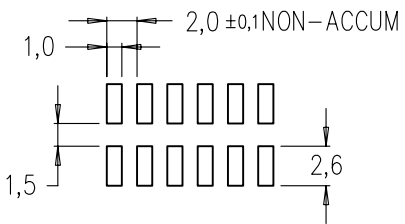
B

PRODUCT NO	POS	DIM X	DIM Y
94262-X04	2X2	2	4
X06	2X3	4	6
X08	2X4	6	8
X10	2X5	8	10
X12	2X6	10	12
X14	2X7	12	14
X16	2X8	14	16
X18	2X9	16	18
X20	2X10	18	20
X22	2X11	20	22
X24	2X12	22	24
X26	2X13	24	26
X28	2X14	26	28
X30	2X15	28	30
X32	2X16	30	32
X34	2X17	32	34
X36	2X18	34	36
X38	2X19	36	38
X40	2X20	38	40
X42	2X21	40	42
X44	2X22	42	44
X46	2X23	44	46
X48	2X24	46	48
X50	2X25	48	50

NOTES

- MATERIAL**
 BODY : HIGH TEMPERATURE PLASTIC UL 94V-0 BLACK
 PIN : COPPER ALLOY
- TOLERANCE UNLESS OTHERWISE NOTED ±0,25
- DIM 1.0 APPLIES TO MOLDED SIDE(S) ONLY. IF SIDE(S) ARE BROKEN, DIM 1.5 MAX APPLIES.
- RECESS APPLIES TO MOLDED SIDE(S) ONLY.
- PLATING ON MATING LENGTH:
 -3XX --- 0.38um Au OVER 1.27um MIN NICKEL UNDERPLATE.
 -5XX --- 0.38um PdNi W Au FLASH OVER 1.27um MIN NICKEL UNDERPLATE.
 -6XX --- 0.76um PdNi W Au FLASH OVER 1.27um MIN NICKEL UNDERPLATE.

- SOLDER TAIL PLATING:**
 - SOLDERTAIL OF P/N:94262-XXX IS PLATED WITH 3.81um MIN TIN/LEAD (90/10) PLATING OVER 1.27um MIN Ni UNDERPLATE.
 - SOLDERTAIL OF P/N:94262-XXXLF IS PLATED WITH 3.81um MIN 100% MATTE TIN PLATING OVER 1.27um MIN Ni UNDERPLATE.
- PACKAGING:**
 - STANDARD PACKAGING IN PLASTIC BAG.
 - SPECIFY 94262-XXXT FOR TUBE PACKAGING.
 - SPECIFY 94262-XXXTR FOR TAPE AND REEL PACKAGING. A PICK-UP CAP IS PROVIDED IN THE CENTRE OF THE PRODUCT (SEE FIG.1) FOR PICK AND PLACE APPLICATION.
- COPLANARITY OF SOLDER LEADS TO BE WITHIN 0,10mm.
- PRODUCT DESCRIPTION CODE :**
 XXXXX-XXXLF
 LEAD FREE ⑥ ⑫
 EXTENSION NUMBER
 BASE NUMBER
- THE HOUSING WILL WITHSTAND EXPOSURE TO 255° C PEAK TEMPERATURE FOR 10 SECONDS IN A CONVECTION, INFRA-RED OR VAPOR PHASE REFLOW OVEN.
- THE HOUSING WILL WITHSTAND EXPOSURE TO 260° C PEAK TEMPERATURE FOR 10 SECONDS IN A WAVE SOLDER APPLICATION WITH A 1.57MM MINIMUM THICK CIRCUIT BOARD.
- THIS PRODUCT MEETS EUROPEAN UNION DIRECTIVES AND OTHER COUNTRY REGULATIONS AS DESCRIBED IN GS-22-008.



RECOMMENDED PAD LAYOUT

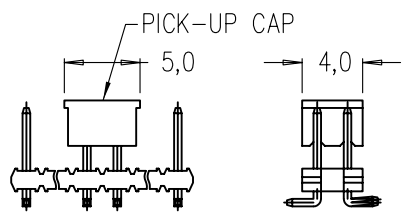


FIG. 1
NOTE 7 (c)

CONFIDENTIAL

mat'l. code				tolerances unless otherwise specified			CUSTOMER COPY		FCI www.fciconnect.com	
ltr	ecn no	dr	date	linear	±0.25		projection	title		
C				angles				MINITEK II SMT STR HEADER (SnPb S.T)		
				dr	BS LOW	5/24/99	← MM →	product family	MINITEK	code
				engr	BS LOW	5/24/99	scale	size	dwg no	sheet
				chr	KB MAH	2/23/05	2:1	A	94262	2 of 2
				appd	JOEY NG	2/23/05				
sheet index	revision sheet									

cage code 22526
 STATUS Released

ACAD

PDM: Rev:C

Printed Jul 20, 2005